

Middlesbrough COVID-19 Update

20th April 2021



North East/National Summary



North East LA COVID Cases - Tested in Current 7 and Previous 7 Day Periods

North East LA	Current 7-Day Period (10th - 16th Apr)		Previous 7-Day Period (3rd - 9th Apr)		% Change Rate
	Number	Rate	Number	Rate	
Hartlepool	40	43	46	49	-13.0%
Newcastle upon Tyne	105	35	102	34	2.9%
Middlesbrough	42	30	47	33	-10.6%
Darlington	30	28	46	43	-34.8%
Stockton-on-Tees	46	23	81	41	-43.2%
Redcar & Cleveland	32	23	20	15	60.0%
Northumberland	62	19	83	26	-25.3%
County Durham	100	19	121	23	-17.4%
North Tyneside	37	18	82	39	-54.9%
South Tyneside	26	17	17	11	52.9%
Gateshead	33	16	39	19	-15.4%
Sunderland	39	14	91	33	-57.1%

Source - GOV.UK COVID Dashboard

National LA COVID Cases - 13th Apr 2021

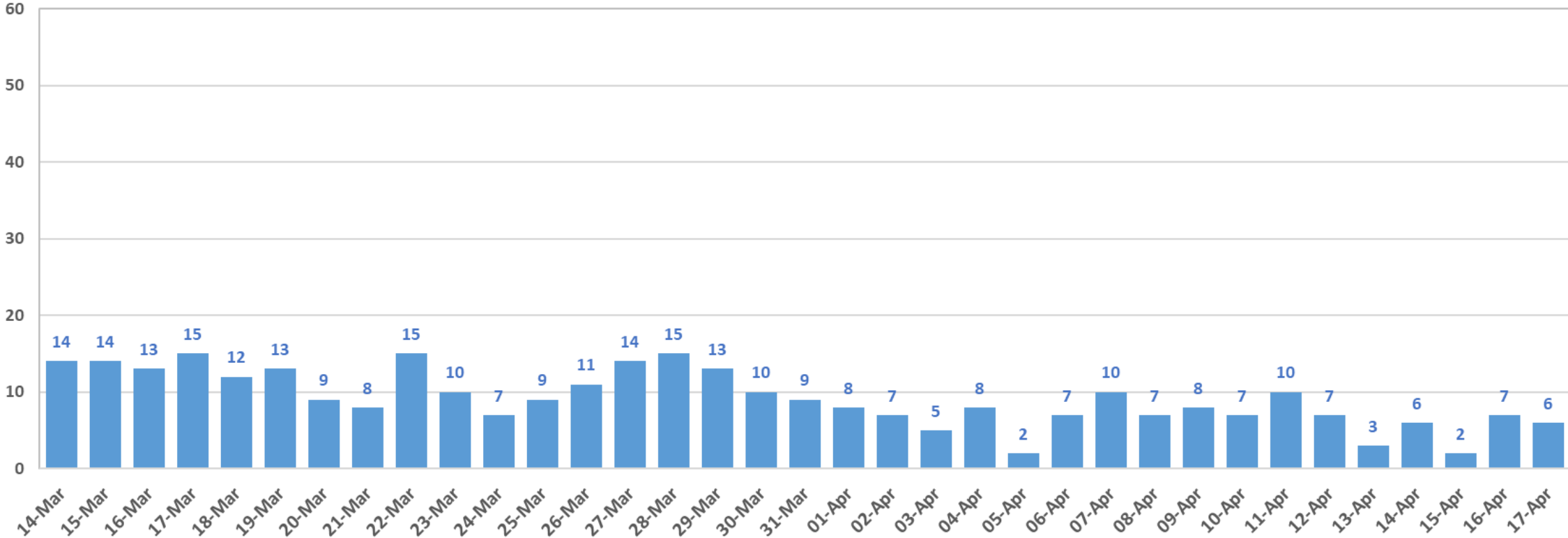
Local Authority		Rate per 100,000
1	Luton	100
2	Doncaster	87
3	Bradford	86
4	Barnsley	79
5	Rotherham	78
6	Kirklees	74
7	Leicester	73
8	Wakefield	72
9	North Lincolnshire	70
10	Kingston upon Hull, City of	69
11	Slough	67
12	Peterborough	63
13	Oldham	60
14	Sheffield	59
15	Manchester	57
16	Blackburn with Darwen	56
17	Rochdale	54
18	Leeds	52
19	Stoke-on-Trent	50
20	Bolton	49

35	Middlesbrough	37
----	---------------	----

COVID Daily Cases



Middlesbrough COVID Cases by Specimen Test Date

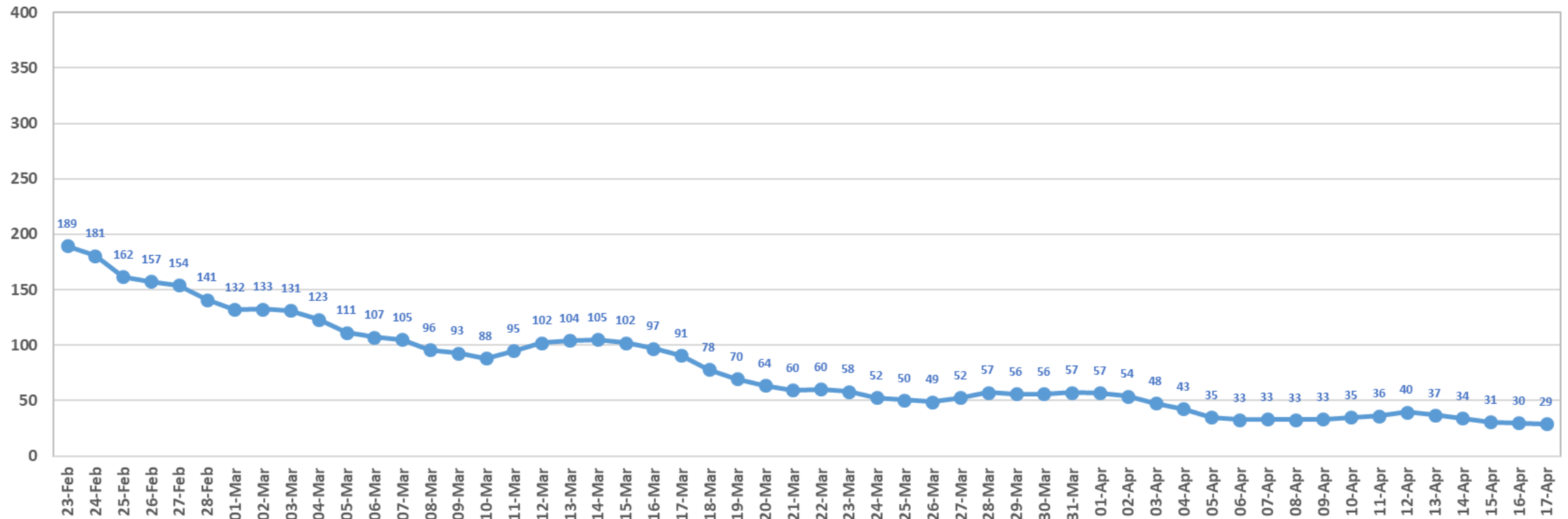


COVID Case Rate



Rate of Middlesbrough Cases based on Specimen Test Date - Rolling 7 Day Average

Rate per 100,000

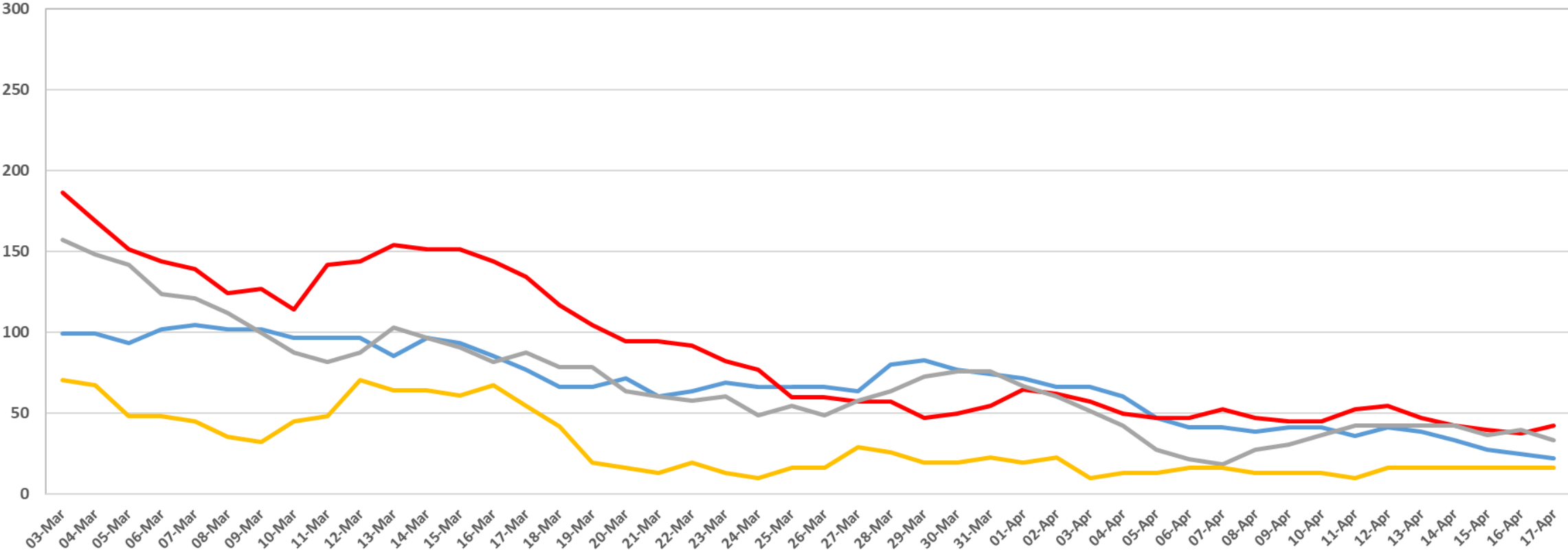


COVID Case Rate – Age Groups



Middlesbrough COVID Cases by Specimen Date - Rolling 7 Day Rate by Age Group per 100,000

0-19 20-39 40-59 60+

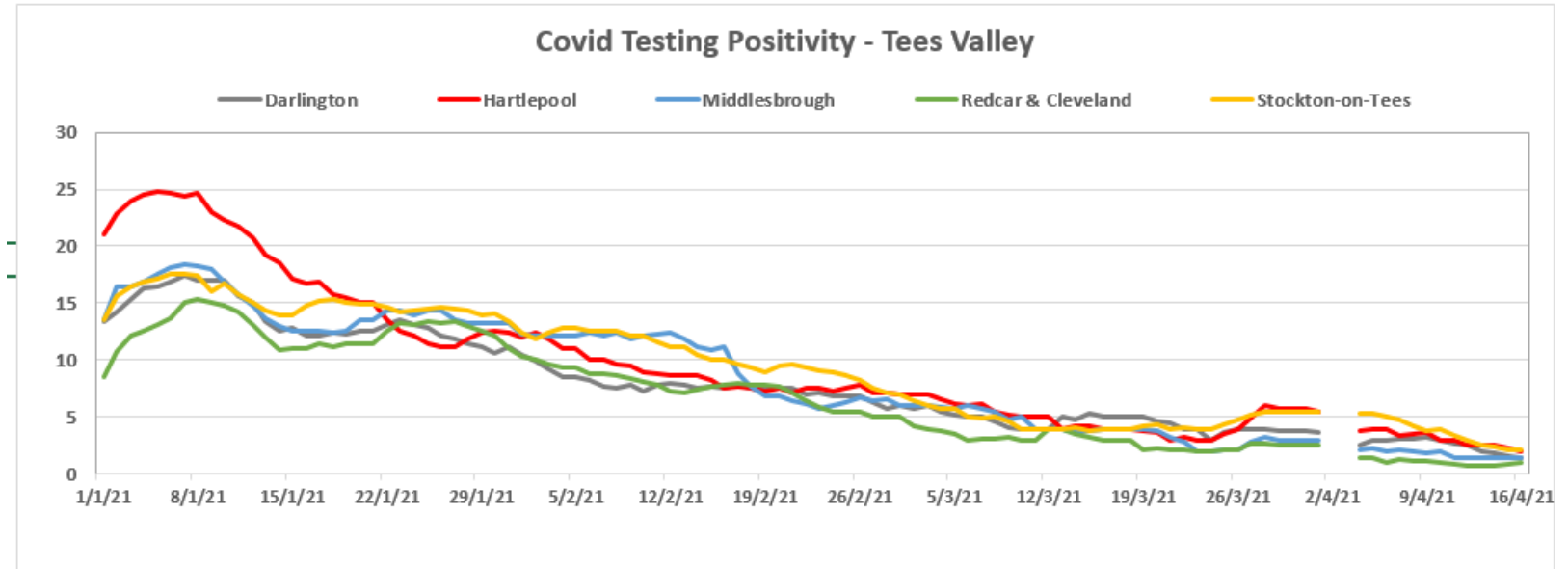


Positivity Rate

The number of positive cases detected as a percentage of tests taken



Local Authority	Positivity (%)	Change From 7 Days Previous
Darlington	1.4	-1.8
Hartlepool	2.0	-1.6
Middlesbrough	1.5	-0.3
Redcar & Cleveland	1.0	-0.1
Stockton-on-Tees	2.1	-1.7
Tees Valley	1.5	-1.1
North East	1.2	-0.6
England	1.2	-0.4

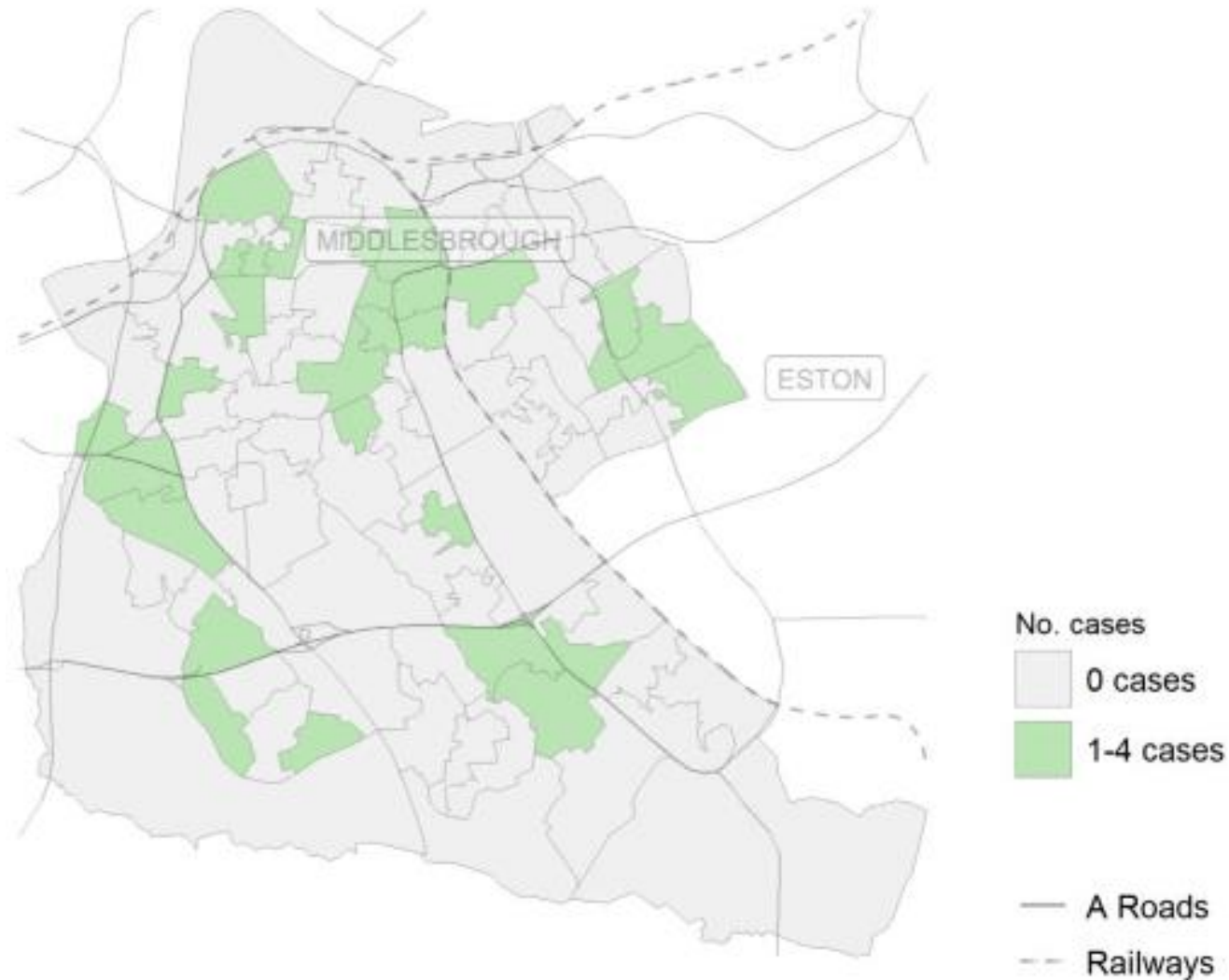


data is based on previous 7 day tests up to 16th April 2021

Source - PHE North East COVID Surveillance Report

LSOA Map

Figure 6. Number of COVID-19 cases (Pillars 1 and 2 combined) in most recent 7-day period (April 11 to April 17 2021), by Middlesbrough LSOA.

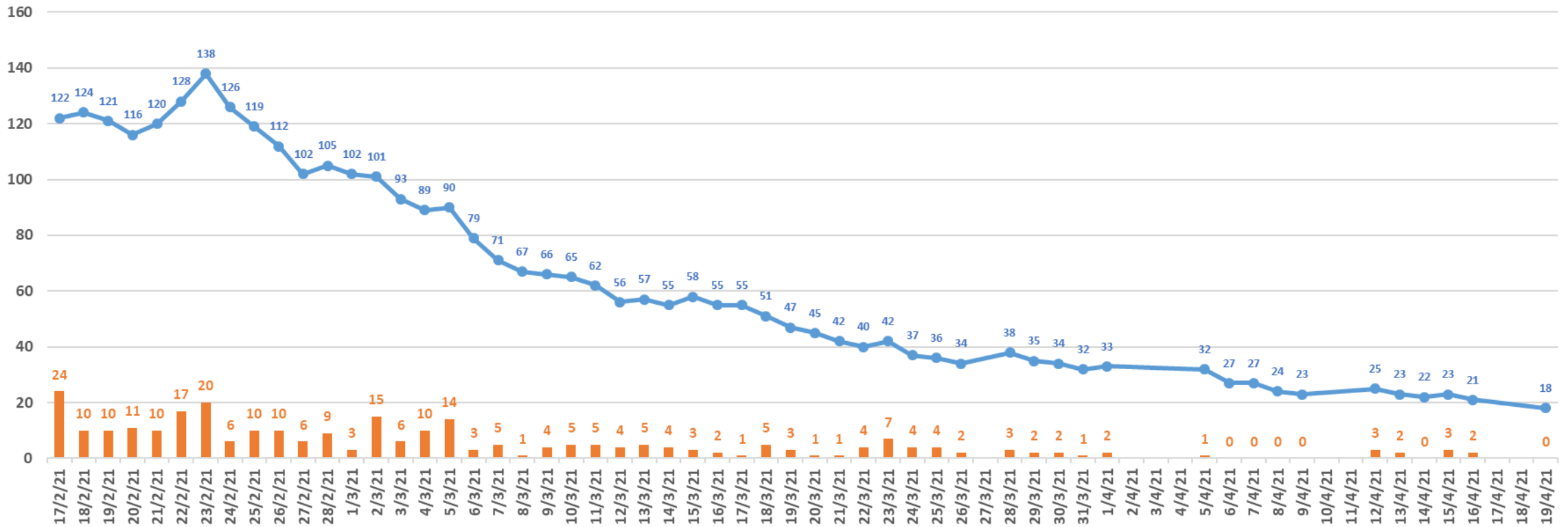


NHS – South Tees COVID Patients



South Tees Trust - COVID Patients

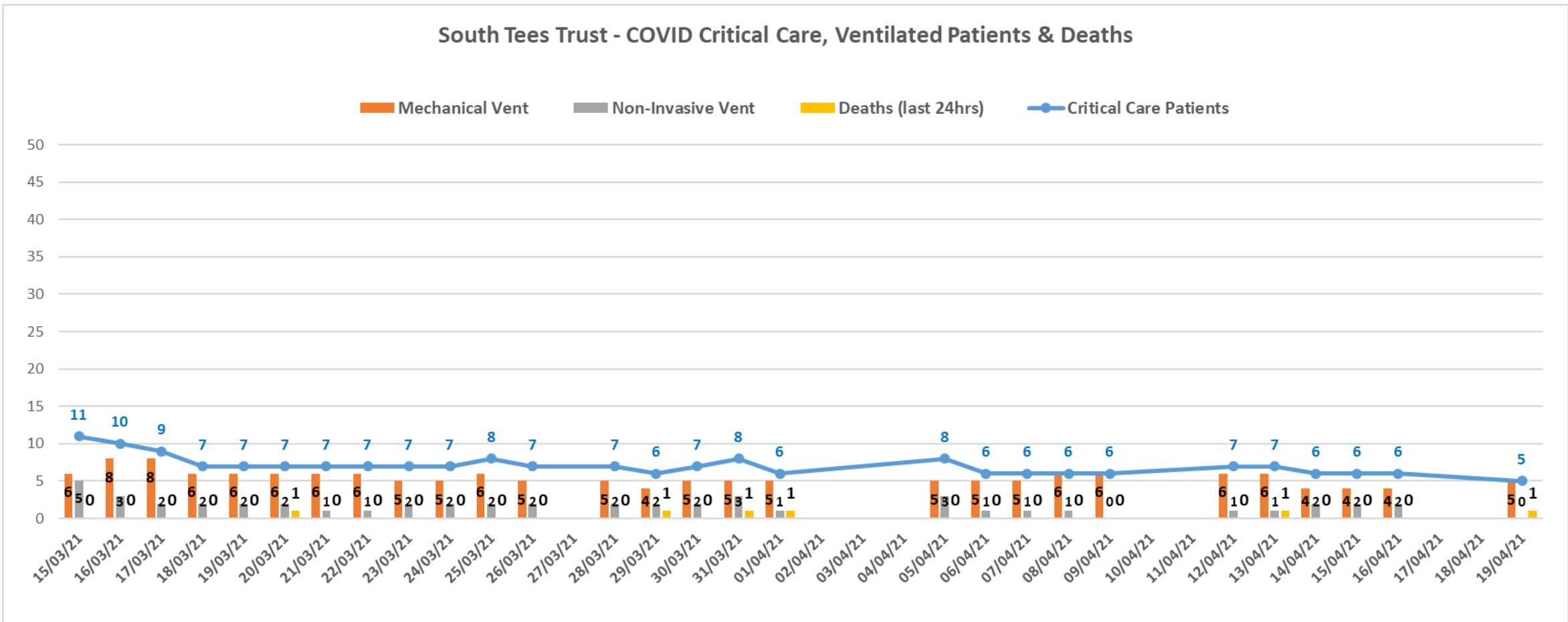
Admitted/Diagnosed With COVID No. COVID Patients Currently In Hospital



NHS – South Tees Critical Care



South Tees Trust - COVID Critical Care, Ventilated Patients & Deaths



Schools – Summary and School Testing



REPORTED ON	School	Year affected	Total St	Total pup	End Date of isolation
15/04/2021	Pennyman Primary Academy	Reception	5	14	24/04/2021
TOTAL	Currently isolating		5	14	
TOTAL	Asked to isolate since Sept 20		876	12217	
TOTAL	Number of schools currently with closed bubbles				1

School	Negatives					Positives				
	Jan	Feb	Mar	Apr	Total	Jan	Feb	Mar	Apr	Total
School Home Test Kit (Self Reported)	1821	6832	38176	9942	56771	5	18	54	18	95
130570_Middlesbrough College	484	663	8392	136	9675	2	1	5		8
138845_Nunthorpe Academy	177	183	3609		3969	1		6		7
133768_Unity City Academy	401	241	1629		2271	1				1
145774_Acklam Grange School	434	320	89		843	3		1		4
134223_The King's Academy	335	308	145		788					
130908_Macmillan Academy	241	175	90		506					
131425_Priory Woods School	96	232	75		403					
138711_Outwood Academy Ormesby		103	280		383		1			1
139823_Outwood Academy Acklam	68	165	8		241		1	2		3
143519_Hollis Academy	81	82	36		199					
147848_Outwood Academy Riverside	89	50	37		176					
142382_Trinity Catholic College	11	110	24		145					
136259_Keys Tees Valley College	12				12					
130571_The Northern School of Art		1	11		12					
142502_River Tees Middle Academy	10	1	1		12					
142487_River Tees High Academy	6				6					
Total	4266	9466	52602	10078	76412	12	21	68	18	119

School home test kits include Middlesbrough residents only. School tests include residents outside Middlesbrough attending a Middlesbrough school.

Tests up to 13th April 2021

Community Testing



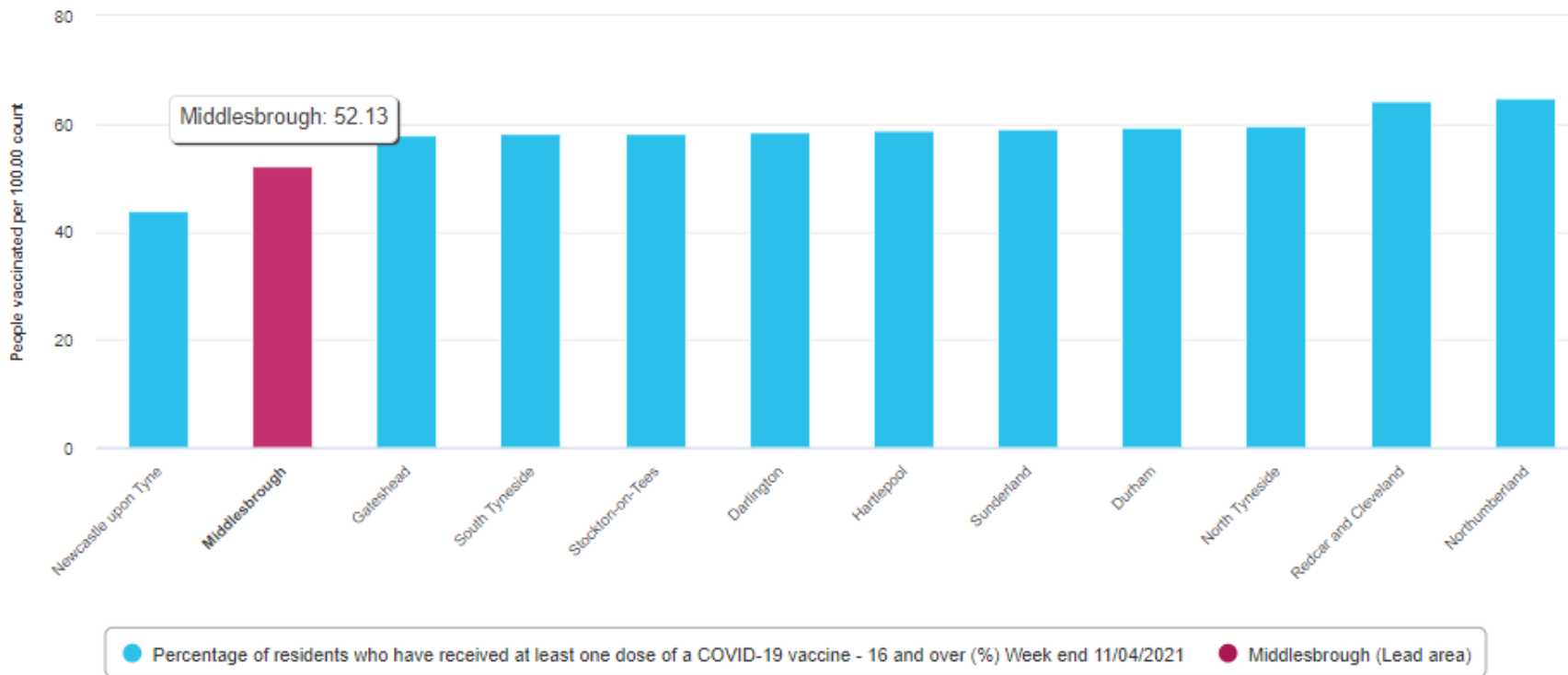
SITE ID	SITE ID	TOTAL TESTS TO DATE	TOTAL POSITIVES TO DATE	STOCK OF LFDS	Address	Number of test bays	Anticipated number of tests per week
Middlesbrough Sports Village	MSVG	1957	7	2575	Alan Peacock Way, Middlesbrough, TS4 3AE	5	700
Newport Hub	NSCH	876	4	1475	St Paul's Road, Middlesbrough, TS1 5NQ	5	700
North Ormesby Hub	NOHE	1015	12	3375	2 Derwent Street, North Ormesby, Middlesbrough, TS3 6JB	3	420

Day	Date	Sports Village			North Ormesby Hub			Newport Hub		
		Daily Test Number	Positive	Collection Test Kits	Daily Test Number	Positive	Collection Test Kits	Daily Test Number	Positive	Collection Test Kits
Mon	22/03/2021	0			33					
Tue	23/03/2021	0			36			23		
Wed	24/03/2021	30			14			35		
Thu	25/03/2021	23			20			12		
Fri	26/03/2021	25			22			11		
Sat	27/03/2021	45						9		
Sun	28/03/2021	36								
TOTALS		159	0	0	125	0	0	90	0	0
Mon	29/03/2021	0			46					
Tue	30/03/2021	0			17			22		
Wed	31/03/2021	23			11			19		
Thu	01/04/2021	35			20					
Fri	02/04/2021									
Sat	03/04/2021									
Sun	04/04/2021									
TOTALS		58	0	0	94	0	0	41	0	0
Mon	05/04/2021									
Tue	06/04/2021	88		0	36		20	24		33
Wed	07/04/2021	63		10	12		17	16		6
Thu	08/04/2021	49		4	19		24	7		2
Fri	09/04/2021	52		11	13		26	5		2
Sat	10/04/2021			10				0		6
Sun	11/04/2021			6						
TOTALS		252	0	41	80	0	87	52	0	49

Vaccination Uptake Rates – 16+



Percentage of residents who have received at least one dose of a COVID-19 vaccine - 16 and over (%) (Week end 11/04/2021) for All local authorities in North East



Middlesbrough – 52.1%

(66,661 of 127,873)

Ranked 91 of 152

England – 53.4%

Source:
Calculated by LG Inform, Cumulative number of residents who have received at least one dose of a COVID-19 vaccine

Vaccination Uptake Rates – Age Groups

Vaccination Group	Vaccinated	% of Population
Dose 1: Total	69,014	49.0%
Dose 2: Total	21,602	15.3%
Dose 1: 50-54	7,519	86.3%
Dose 2: 50-54	1,461	16.8%
Dose 1: 55-59	8,594	95.7%
Dose 2: 55-59	1,627	18.1%
Dose 1: 60-64	8,213	101.3%
Dose 2: 60-64	1,296	16.0%
Dose 1: 65-69	6,867	103.2%
Dose 2: 65-69	923	13.9%
Dose 1: 70-74	6,173	102.8%
Dose 2: 70-74	2,514	41.9%
Dose 1: 75-79	4,193	100.3%
Dose 2: 75-79	2,495	59.7%
Dose 1: 80+	6,074	97.1%
Dose 2: 80+	4,831	77.2%
Dose 1: Care Home 65+	755	
Dose 2: Care Home 65+	480	

**Data up to 19th April 2021*

***Population figures based on ONS mid 2019 estimates*

Vaccination Uptake Rates – MSOAs



MSOA Name	Total			50-54		55-59		60-64		65-69		70-74		75-79		80+	
	Pop*	50+ %	Dose 1	Pop.	Dose 1	Pop.	Dose 1	Pop.	Dose 1	Pop.	Dose 1	Pop.	Dose 1	Pop.	Dose 1	Pop.	Dose 1
Middlesbrough Central	13,252	16.1%	25.8%	478	77.2%	377	89.4%	416	85.6%	283	97.9%	211	108.5%	148	93.9%	215	99.5%
Ayresome	9,664	19.8%	25.9%	418	71.8%	409	75.8%	342	95.6%	236	101.7%	203	88.7%	140	89.3%	162	109.9%
North Ormesby & Brambles	5,944	31.0%	40.8%	348	78.2%	380	88.2%	348	87.9%	240	102.5%	221	89.1%	130	90.0%	173	89.6%
Newport & Maze Park	6,733	30.5%	43.6%	389	90.7%	435	95.6%	378	96.3%	275	100.7%	202	108.4%	148	91.2%	229	84.7%
Linthorpe East & Albert Park	5,919	31.5%	44.8%	355	83.9%	356	94.7%	338	91.4%	264	109.8%	217	107.8%	129	107.0%	203	108.4%
Linthorpe West	9,788	32.6%	45.6%	677	77.4%	590	98.3%	511	107.0%	424	100.9%	370	108.4%	257	101.6%	357	105.0%
Beechwood & James Cook	5,686	32.9%	46.0%	383	78.1%	344	92.2%	284	104.2%	209	101.0%	232	92.2%	153	92.2%	263	90.1%
Berwick Hills	7,406	31.4%	46.1%	441	87.8%	457	102.2%	452	100.0%	291	116.5%	240	96.7%	142	101.4%	299	80.3%
Park End	6,104	31.1%	46.6%	407	87.7%	356	104.2%	361	100.0%	259	103.5%	199	107.0%	94	112.8%	220	84.5%
Park Vale	5,562	33.0%	49.0%	343	80.8%	434	89.6%	292	118.5%	268	105.2%	179	107.8%	149	102.0%	172	98.8%
Thorntree	9,221	37.7%	51.0%	651	88.6%	694	91.9%	608	100.3%	479	107.7%	362	109.9%	293	86.7%	386	106.5%
Easterside	5,395	40.4%	52.1%	309	82.5%	444	93.5%	383	108.6%	336	91.4%	224	119.2%	154	103.2%	328	86.3%
Acklam	5,992	40.3%	55.2%	448	93.1%	437	101.4%	317	108.2%	283	111.0%	319	92.5%	282	89.4%	327	105.2%
Stainton & Hemlington	9,261	40.5%	56.7%	538	100.2%	620	97.1%	613	104.4%	635	96.5%	514	108.9%	320	107.2%	515	96.3%
Coulby Newham	8,528	44.6%	58.5%	681	83.7%	725	97.0%	661	96.4%	478	108.8%	460	106.3%	285	98.2%	511	87.7%
Kader	5,067	45.6%	59.4%	345	82.3%	348	95.1%	349	112.6%	297	93.6%	294	97.6%	253	107.5%	424	95.0%
Marnton West	5,298	49.1%	61.1%	421	85.7%	445	95.3%	379	103.7%	325	108.0%	357	101.7%	291	89.3%	383	102.6%
Nunthorpe & Marnton East	10,232	45.1%	61.9%	708	93.6%	721	97.2%	662	104.1%	637	105.2%	693	100.9%	501	108.6%	697	97.3%
Trimdon	5,928	47.9%	67.1%	373	96.5%	404	109.9%	412	99.8%	435	99.3%	510	97.3%	310	117.4%	394	112.7%
Total	140,980	34.7%	48.0%	8,713	85.6%	8,976	95.4%	8,106	101.1%	6,654	103.1%	6,007	102.6%	4,179	100.2%	6,258	97.0%

Data up to 15th April 2021

* ONS Mid-2019 population estimates by MSOA area